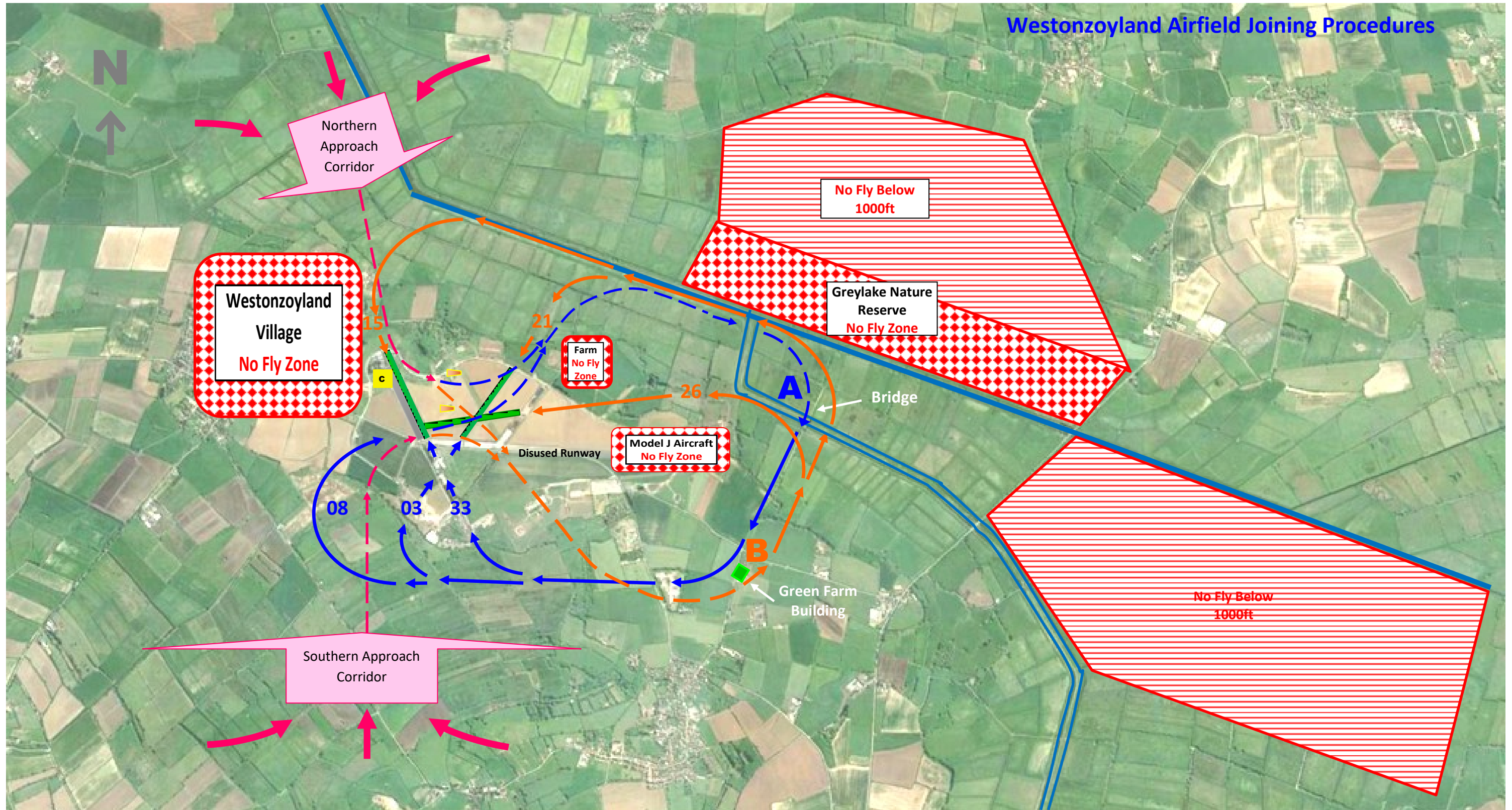


Westonzoyland Airfield Joining Procedures



Radio is unmanned but you may receive replies from other traffic

Aircraft are asked to make 'blind calls to: **"Westonzoyland Traffic"** on **129.830** - Calls Required at 5 miles out and on Joining Overhead.

Join Circuit Overhead at 1500 ft Descending to Circuit Height 800 ft at Point A or B

Downwind calls should be made at: **point A** for runways **03, 08 & 33** or **point B** for runways **15, 21 & 26** then call on **Final Approach**