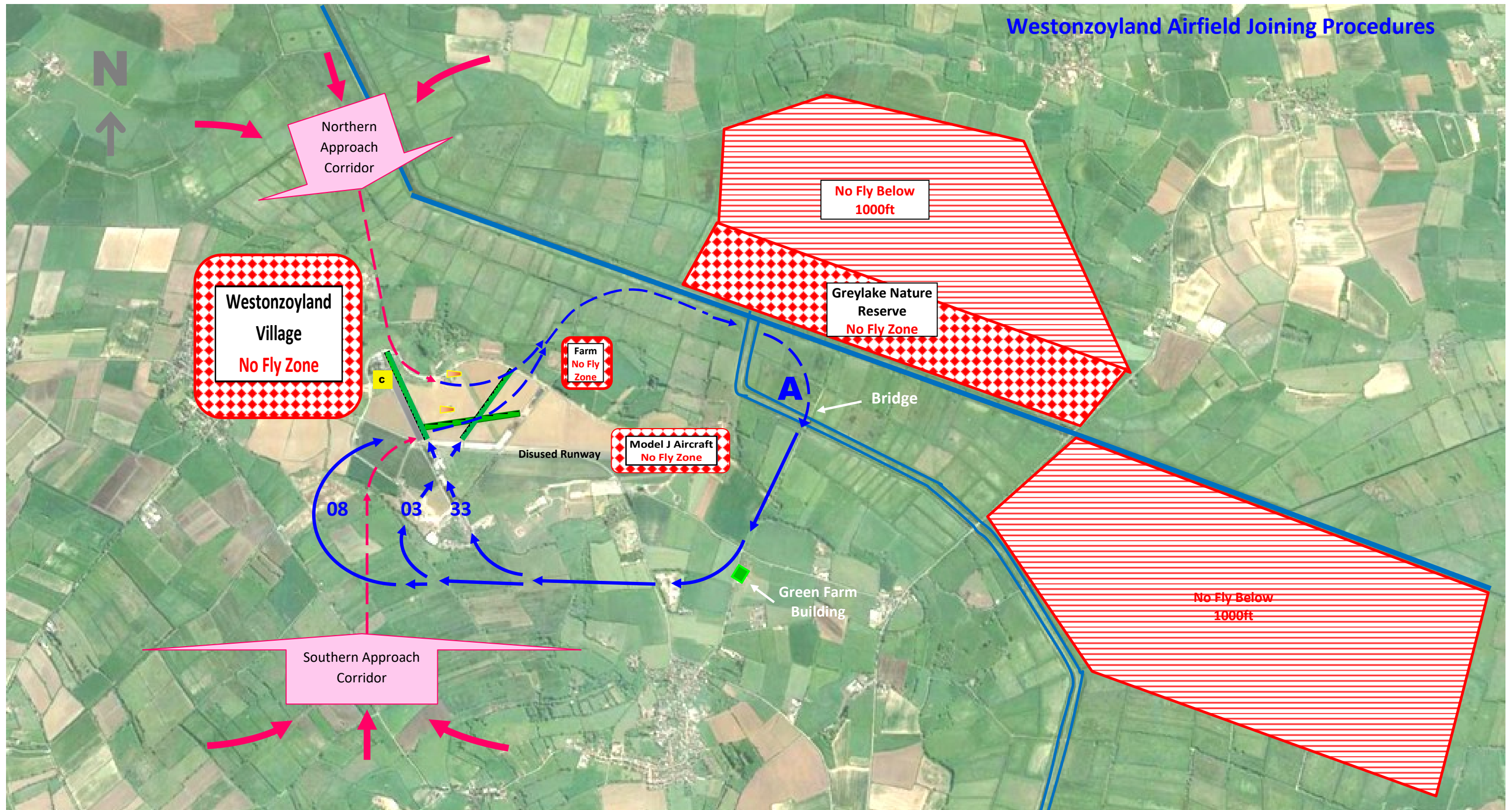


Westonzoyland Airfield Joining Procedures



Radio is unmanned but you may receive replies from other traffic
Aircraft are asked to make 'blind calls to: **"Westonzoyland Traffic" on 129.830** - Calls Required at 5 miles out and on Joining Overhead.
Join Circuit Overhead at 1500 ft Descending to Circuit Height 800 ft at Point A or B
Downwind calls should be made at: **point A for runways 03, 08 & 33** then call on Final Approach